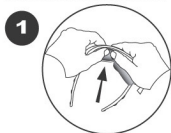


To REMOVE the lenses:



Hold the frame in both hands with the lenses facing out. Press firmly on the top of each lens to "pop" it out of the frame.

CHANGING THE LENSES

To REPLACE the lenses:



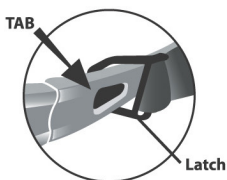
Place the wider edge of each lens in the groove of the frame, closest to the nose piece.



Firmly push the narrow end into the frame groove. Run fingers around the edge of the lens frame to ensure proper fit.

To Insert Strap:

Place the arm of the glasses through the strap latch. "Click" tab into the hole of the sunglass arm. Pull back on the strap to lock into place.

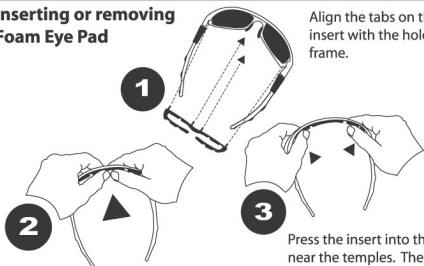


To Remove Strap:

Press on the tab to release the strap from the arm. Repeat the process for the other sunglass arm.

Inserting or removing Foam Eye Pad

Align the tabs on the foam insert with the holes in the frame.



Press the insert into the holes above the nose piece. The insert will "click" into place.

Press the insert into the holes near the temples. The insert will "click" into place.

To remove foam insert reverse this process.

Raptor I & II Warranty Card