



## UNIVERSAL DRINK HOLDER

# 1463

### PARTS INCLUDED

- 1 Drink Ring with Stainless Steel Mug
- 1 Perch Mount Arm
- 1 Anti-Seize Packet
- 1 Perch Mount Kit Containing:
  - 2 1/4"-20 x 2" Button Socket Cap Screws
  - 2 1/4"-20 x 2-1/4" Button Socket Cap Screws
  - 2 M6 x 1.0 x 55mm Button Socket Cap Screws
  - 2 Washers
  - 2 Spacers
- 1 Hardware Kit Containing:
  - 2 Shims
  - 1 Thumb Nut
  - 1 5/16" Split Lock Washer
- 1 Installation Instructions

Please read and understand entire instructions before starting installation.

### THANK YOU FOR CHOOSING KÜRYAKYN!

**IN ORDER TO PROTECT YOU AND OTHERS FROM POSSIBLE INJURY AND/OR PROPERTY DAMAGE OR LOSS, PLEASE PAY CLOSE ATTENTION TO ALL INSTRUCTIONS, WARNINGS, CAUTIONS AND NOTICES REGARDING THE USE AND CARE OF THIS PRODUCT.**

#### WARNING

THIS INDICATION ALERTS YOU TO THE FACT THAT IGNORING THE CONTENTS DESCRIBED HEREIN CAN RESULT IN POTENTIAL DEATH OR SERIOUS INJURY.

#### NOTICE

This indication alerts you to the fact that ignoring the contents described herein may negatively affect product performance and functionality or damage the product itself or the product it is being attached to.

#### CAUTION

This indication alerts you to the fact that ignoring the contents described herein can result in potential injury.

### TOOLS SUGGESTED

Set of Combination Wrenches, Set of Hex Wrenches, Set of Torx Wrenches, Adjustable Wrench

**STRICTLY OBSERVE THE FOLLOWING GUIDELINES IN ORDER TO USE THE PRODUCT PROPERLY AND AVOID POTENTIALLY DANGEROUS ACCIDENTS.**

#### NOTICE

**IF INSTALLING THIS PRODUCT FOR ANOTHER PARTY, PLEASE MAKE SURE THEY RECEIVE THIS COPY OF THE INSTALLATION INSTRUCTIONS SO THEY ARE AWARE OF THE IMPORTANT INFORMATION CONTAINED IN THEM.**

### STEP 1

Read and understand all steps in the instructions before starting the installation. Park the motorcycle on a hard, level surface and turn off the ignition.

**NOTE:** Intended to hold the included Stainless Steel Mug. Universal fitment for Clutch or Brake Perch Mounting Bolts vertical spacing center to center at 1-1/8" to 1-11/16" apart.

### CUSTOMER SERVICE

877.370.3604 (toll free)

### INSTALLATION QUESTIONS

techsupport@kuryakyn.com  
or call 715.247.2983

### LIMITED WARRANTY

Kuryakyn warrants that any Kuryakyn products sold hereunder, shall be free of defects in materials and workmanship for a period of one (1) year from the date of purchase by the consumer excepting the following provisions:

- Kuryakyn shall have no obligation in the event the customer is unable to provide a receipt showing the date the customer purchased the product(s).
  - The product must be properly installed, maintained and operated under normal conditions.
  - Kuryakyn makes no warranty, expressed or implied, with respect to any gold plated products.
  - Kuryakyn shall not be liable for any consequential and incidental damages, including labor and paint, resulting from failure of a Kuryakyn product, failure to deliver, delay in delivery, delivery in nonconforming condition, or for any breach of contract or duty between Kuryakyn and a customer.

• Kuryakyn products are often intended for use in specific applications. Kuryakyn makes no warranty if a Kuryakyn product is used in applications other than intended.

• Kuryakyn electrical products are warranted for one (1) year from the date of purchase by the consumer. L.E.D.'S contained in components of Kuryakyn products will be warranted for defects in materials and workmanship for 3 years from the date of purchase where as all other components shall be warranted for one(1) year. This includes, but is not limited to; control modules, wiring, chrome & other components.

• Kuryakyn makes no warranty of any kind in regard to other manufacturer's products distributed by Kuryakyn. Kuryakyn will pass on all warranties made by the manufacturer and where possible, will expedite the claim on behalf of the customer, but ultimately, responsibility for disposition of the warranty claim lies with the manufacturer.

### ABOUT OUR CATALOG

For purchasing Kuryakyn® products, you can receive a complete catalog free of charge.

Send the Proof-of-Purchase below with your address to: Kuryakyn, P.O. Box 339, Somerset, WI 54025.

Please indicate either Accessories Catalog for Harley-Davidson® or GL & Metric Cruisers.

Be sure to ask your local dealer about other Kuryakyn® products, the motorcycle parts and accessories designed for riders by riders.

©2005 Kuryakyn USA® All Rights reserved.



**CAUTION** Ensure that the installation of this product does not interfere with the proper operation of the motorcycle before riding.

**NOTICE** Avoid damage to the motorcycle. Protect painted surfaces with a soft cloth or blanket.

**NOTICE** It is the installer's responsibility to ensure that there is adequate clearance between the Drink Holder and any painted surfaces. Küryakyn is not responsible for any damage due to inadequate clearance.

**NOTICE** Be aware of any cables/wires that could potentially be pinched or crushed while using this product.

**STEP 2** Place a clean, soft blanket over the gas tank to protect the paint.

**STEP 3** Select either the clutch or brake perch for mounting the arm. The arm will usually point towards the center of the bike. Remove the bottom screw securing the clutch or brake perch halves as shown in PIC 1; this will not be used again.

**STEP 4** Identify the correct screw, either the metric or standard, by comparing threads on the included screws to the threads from the screws that were removed. The 1/4"-20 x 2-1/4" screws are generally used on older H-D motorcycles, the 1/4"-20 X 2" screws on newer Harleys and the M6 X 1.0 X 55mm on Metric bikes.

**NOTICE** Use the supplied anti-seize for fasteners; this will prevent galling and make future removal of fasteners easier.

**STEP 5** As shown in PIC 2, place the washer over the screw, then insert through the perch mount arm and place the spacer over the screw then add a dab of anti-seize to the screw end.

**STEP 6** As shown in PIC 3, place the arm, screw, washer and spacer on the perch and start the screw, finger tighten the screw.

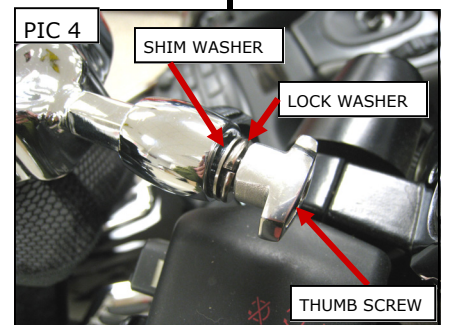
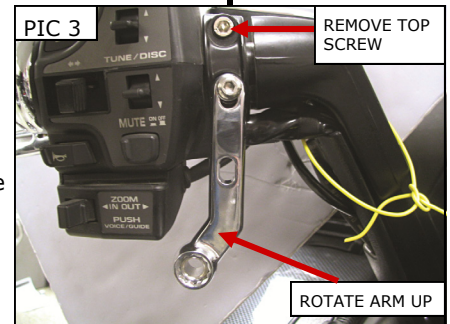
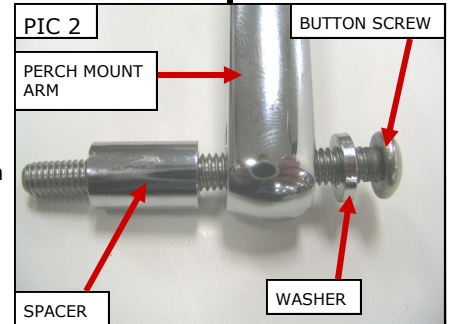
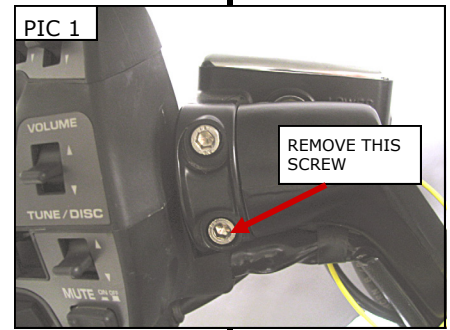
**STEP 7** Remove the upper screw securing the perch mounting halves; it will not be used again. PIC 3

**STEP 8** Rotate the arm up into position and install the screw, washer, and spacer, while using a dab of anti-seize as in STEP 5. PIC 3

**STEP 9** Tighten both of the screws securely.

**STEP 10** To mount the Universal Drink Ring, place the stud through the mounting arm, place one of the shims and the flat washer over the protruding end (PIC 4). Apply anti-seize to the threaded portion of the stud and secure with the thumb nut.

-cont.-



**STEP 11** Turn the handlebars in both directions to their full stop position and ensure that there is clearance between the Universal Drink Ring with the Stainless Steel Mug in it and the gas tank, dash and other accessories.

**WARNING** ENSURE THAT THERE IS CLEARANCE AT ALL POINTS WHEN THE HANDLEBARS ARE TURNED, INSUFFICIENT CLEARANCE MAY CAUSE DAMAGE TO THE MOTORCYCLE OR CAN CAUSE LOSS OF CONTROL THAT COULD RESULT IN SEVERE INJURY OR DEATH.

**STEP 12** Tighten all hardware.

**WARNING** TO PREVENT POSSIBLE LOSS OF CONTROL, WHICH COULD RESULT IN A POSSIBLE INJURY OR DEATH, WE DO NOT RECOMMEND REMOVING AND REPLACING THE MUG IN THE RING WHILE RIDING THE MOTORCYCLE.

**NOTICE** Do not overload the Passenger Pouch with excessive weight.

**NOTICE** The adjustability of the Drink Ring was not intended to prevent spills.

**NOTICE** Ensure that the Drink Ring is secure on the Mount and that the Mount is secure on the motorcycle. Küryakyn is not responsible for any belongings that are stolen or damaged from use of this Drink Ring/Mug or from the Drink Ring/Mug or Mount not being properly secured to the motorcycle. It is the installer's responsibility to ensure that all of the fasteners (including pre-assembled) are tightened before operation of the motorcycle. Küryakyn will not provide warranty coverage on products or components lost due to improper installation or lack of maintenance. Periodic inspection and maintenance are required on all fasteners.

*Ride On!*

PAGE

**3**